

# **AMBAG**

## **Board of Directors Meeting**

**September 13, 2023**



# Item #1: Call To Order



## Item #2: Pledge of Allegiance



## **Item #3: AB 2449 Vote On “Just” and “Emergency” Cause**

**Recommended Action: Approve**



# Item #4: Roll Call



## **Item #5: Oral Communications from the Public on Items Not on the Agenda**

**(A maximum of three minutes on any  
subject not on the agenda)**



# **Item #6: Oral Communications from the Board on Items Not on the Agenda**



# **Item #7A: Executive/Finance Committee**

## **Recommended Action: Information**





# **Item #7B: Monterey Bay National Marine Sanctuary (MBNMS) Advisory Council (SAC) Meeting**

**Recommended Action: Direct**



# **Item #8: Executive Director's Report**

**Recommended Action: Information**



## **Item #9: Consent Agenda (Items #9A – 9H)**

**Recommended Action: Approve**



# **Item #10: Items Removed from Consent Calendar for Discussion and Possible Action**



# **Item #11A: 2026 Regional Growth Forecast Preferred Methodology**

**Recommended Action: Approve**



# 2026 Regional Growth Forecast

Heather Adamson, AMBAG  
Beth Jarosz, Population Reference Bureau

September 13, 2023



# Overview

- Background and purpose of forecast
- Methodology options
- Next steps



## What is the Forecast?

- Forecast for tri-county area:
  - Population
  - Housing
  - Employment
- Base Year – 2020
- Horizon Year – 2050
- Basis for planning for growth in the MTP/SCS, transportation project level analysis, corridor studies, economic analysis, etc.
- Input for the Regional Travel Demand Model which forecasts travel patterns





## How the forecast relates to other planning efforts

- Forecast is an expectation of growth not the same as...
  - General plan: General plan is buildout; forecast is anticipated growth by 2050.
  - Regional Housing Needs Allocation (RHNA): RHNA is an assessment of and plan for addressing 8-year housing need, forecast is anticipated growth by 2050.
    - Region plan shall accommodate 6<sup>th</sup> Cycle RHNA by 2050
    - Local housing elements will be considered during subregional allocation

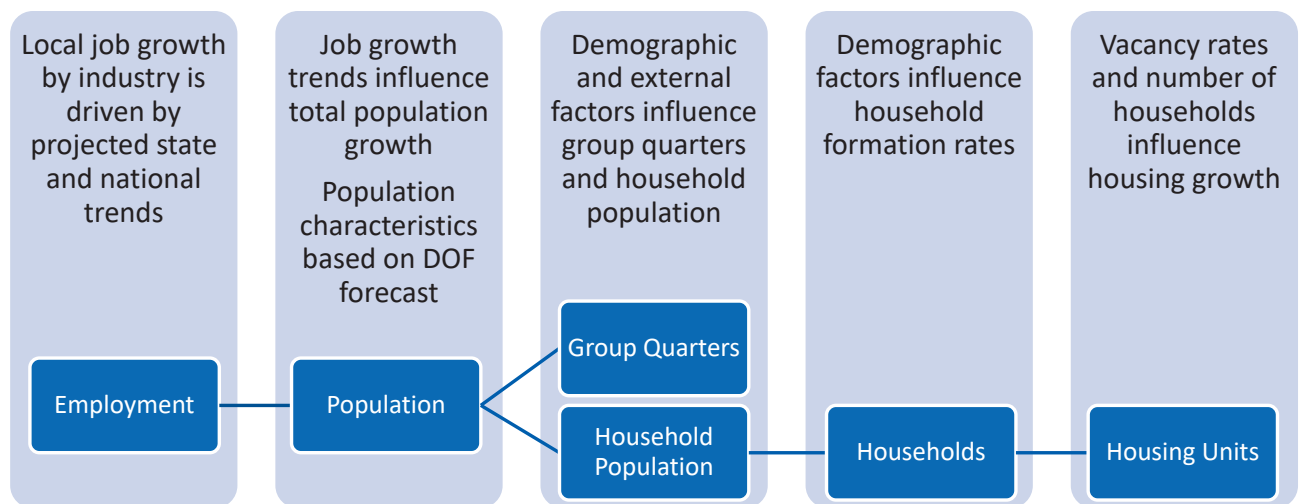


# Three Methodology Options for Consideration

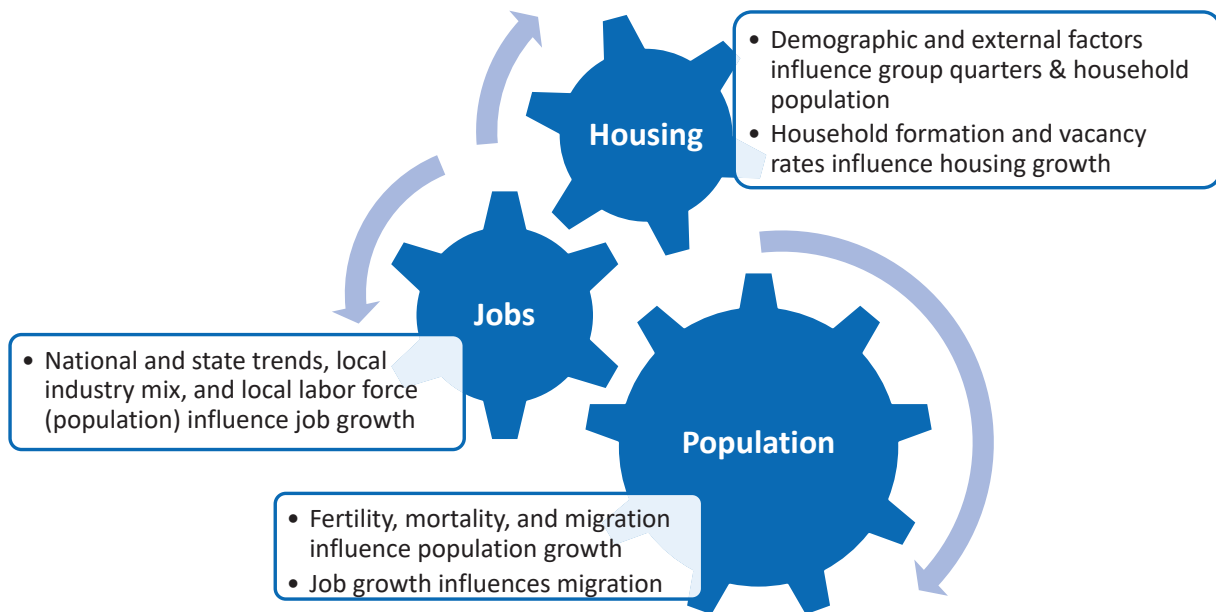
- 1. Use employment-driven methodology similar to 2022, 2018, and 2014 RGF
- 2. Update population model to a cohort-component model
- 3. Use DOF population forecast



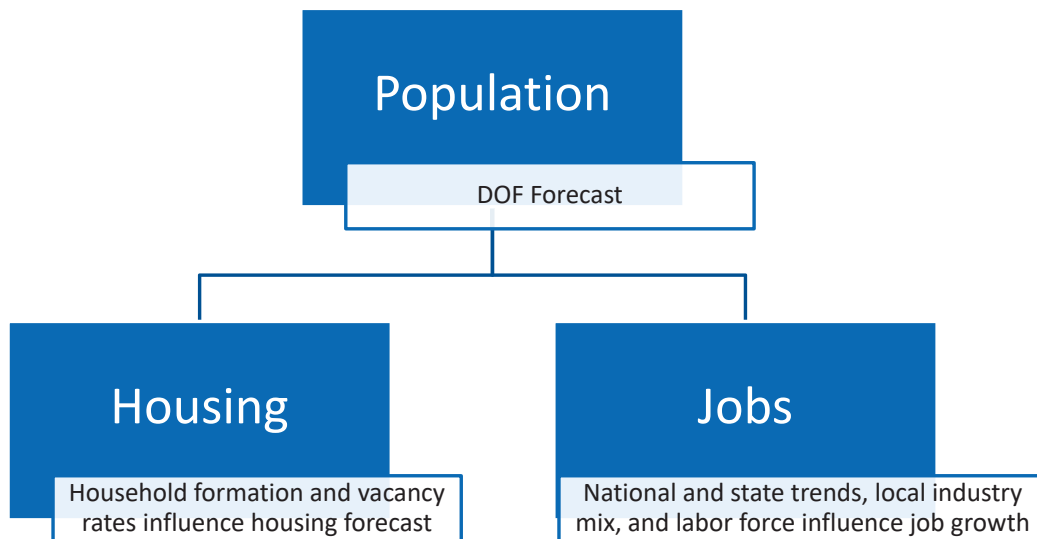
# 1. Employment-Driven Forecast Model



## 2. Cohort-Component Model



### 3. DOF Population Forecast



## Three Methodology Options

- 1. Use employment-driven methodology similar to 2022, 2018, and 2014 RGF
  - Pro: Consistent with prior AMBAG MTP/SCSs
  - Con: Weaker linkage model components and relies on DOF for age/race/sex
- 2. Update population model to a cohort-component model
  - Pro: Consistent with other California COGs, allows closest linkages between model components
  - Con: Slightly more labor-intensive (but well within budget for RGF)
- 3. Use DOF forecast for population
  - Pro: Saves consulting time
  - Con: No local input, weak linkage between population and jobs forecast, and DOF forecast for small counties varies widely between releases



## New Data

- Regardless of method, AMBAG will update data to 2020 (and through 2022-2023 where possible)



## Recommended Forecast Methodology

- The Planning Directors Forum discussed the methodology options at its July and August meetings.
- The Planning Directors expressed support for Option 2 (Cohort Component Population Forecast Method) as it aligns AMBAG with other regional agencies and allows for the most local input and linkages between population, jobs, and housing.
- The forecast methodologies were presented to the AMBAG Board on August 9<sup>th</sup> for discussion and Board members also felt that Option 2 was the best option for AMBAG.





## Timeline/Next Steps

- Summer/early Fall 2023 – Select a method and produce preliminary draft forecast
- Fall 2023 – Complete draft regional growth forecast
- Early 2024 – Begin subregional allocation



## Recommendation

- The Board of Directors are asked to approve Option 2 (Cohort Component Population Method) as the methodology for developing the 2026 Regional Growth Forecast.



## **Item #12: Adjournment**

**Next meeting: October 11, 2023**

